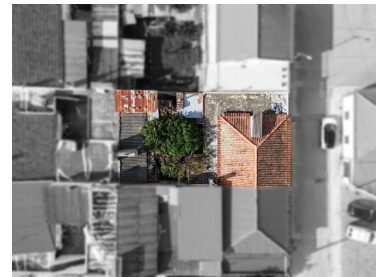




## Gáfete - Villa



 **3**  
Bedrooms
  **2**  
Bathrooms
  **139,9**  
Area (m<sup>2</sup>)
  **215**  
Land Area (m<sup>2</sup>)
  **Garage**

**58 000 €**  
(EUR €)

### Habitable 3 bedroom villa with garage in Gáfete

Transform this House into your Home! Imagine all the possibilities in these 215 m<sup>2</sup>: from the creation of your permanent home, from a relaxing holiday home to a property ready to generate income. A house with great potential, which needs recovery/modernization, yet remains habitable. It offers the perfect opportunity for anyone looking for a personal project. Located in Gáfete, Crato, in Alto Alentejo, this property has a large space and a solid structure, ready to be remodeled and adapted to your needs and tastes. Ideal for those who want to create the home of their dreams or even for those looking for a holiday option in a quiet and cozy place, or be an excellent base for a new chapter. If it is your goal, it can also be an excellent opportunity for investment, transforming the property into a short or long-term rental option in an area with immense demand. Don't miss the opportunity to acquire a property with immense potential, which only waits for the touch of your creativity to become something truly special. Geographically, Gáfete has a privileged location with excellent access to the IP2, 28 km from Portalegre, 15 km from Crato, 20 km from the future Pisão dam expected to be



**Mónica Garcia**

964 623 865 <sup>2</sup>

monica.garcia@wefind4u.pt

**T 960254776 <sup>2</sup> · E geral@wefind4u.pt**  
**Rua Quinta do Gato Bravo, nº10A letra H, Feijó 2810-352 Almada**  
**AMI 15593**

<sup>1</sup> (Call to national fixed network) | <sup>2</sup> (Call to national mobile network)



completed by the end of 2026 ( url ) and 200 km from Lisbon. Its proximity to the IP2 also gives great access to Spain (Badajoz), Beira Baixa and many other tourist areas of the Alentejo (Castelo de Vide, Marvão, Elvas, Alter do Chão) This village has an excellent set of basic services in our daily lives, such as pharmacy, supermarkets, bakery, ATM, gas station, ready-to-wear shops, Post Office, Health Center. In the leisure area, it has several places such as cafes with terraces, municipal swimming pools, bullfighting field, football field and a very interesting cultural heritage (Parish Church of Gáfete: This interesting temple already existed in the century. XVI, being one of the churches of the Priory) Its surroundings also invite the practice of nature sports (cycling, hiking, etc.) Undoubtedly a good option for those who want a holiday home in a quiet location in Alto Alentejo.

Book your visit!

Finder Mónica Garcia

We share commission with all professional real estate agencies 50/50.

If you are looking for a house, contact us, we have a unique and personalized search service for each client.

License AMI:15593.

## Property Features

- Proximity: Open field, Pharmacy
- Terrace
- Living rooms: 1
- Energetic certification: E
- Built year: 1951
- Garage
- Converted attic



**Mónica Garcia**

964 623 865 <sup>2</sup>

monica.garcia@wefind4u.pt

**T 960254776 <sup>2</sup> · E geral@wefind4u.pt**  
**Rua Quinta do Gato Bravo, nº10A letra H, Feijó 2810-352 Almada**  
**AMI 15593**

<sup>1</sup> (Call to national fixed network) | <sup>2</sup> (Call to national mobile network)